

}

Ashland Impervious Area Map

Impervious Area is any surface that prevents or significantly impedes the infiltration of water into the underlying soil. This can include but is not limited to: roads, driveways, parking areas and other areas created using non-porous material; buildings, rooftops, structures, artificial turf and compacted gravel or soil. Stormwater runoff is the greatest contributor of pollution to our local waterbodies, and with increased impervious surface area challenges arise in flooding and contaminated waterways.

- [Protecting Water Quality from Urban Runoff.pdf](#)
- [Stormwater Frequently Asked Questions.pdf](#)

Stormwater Management Utility Rates

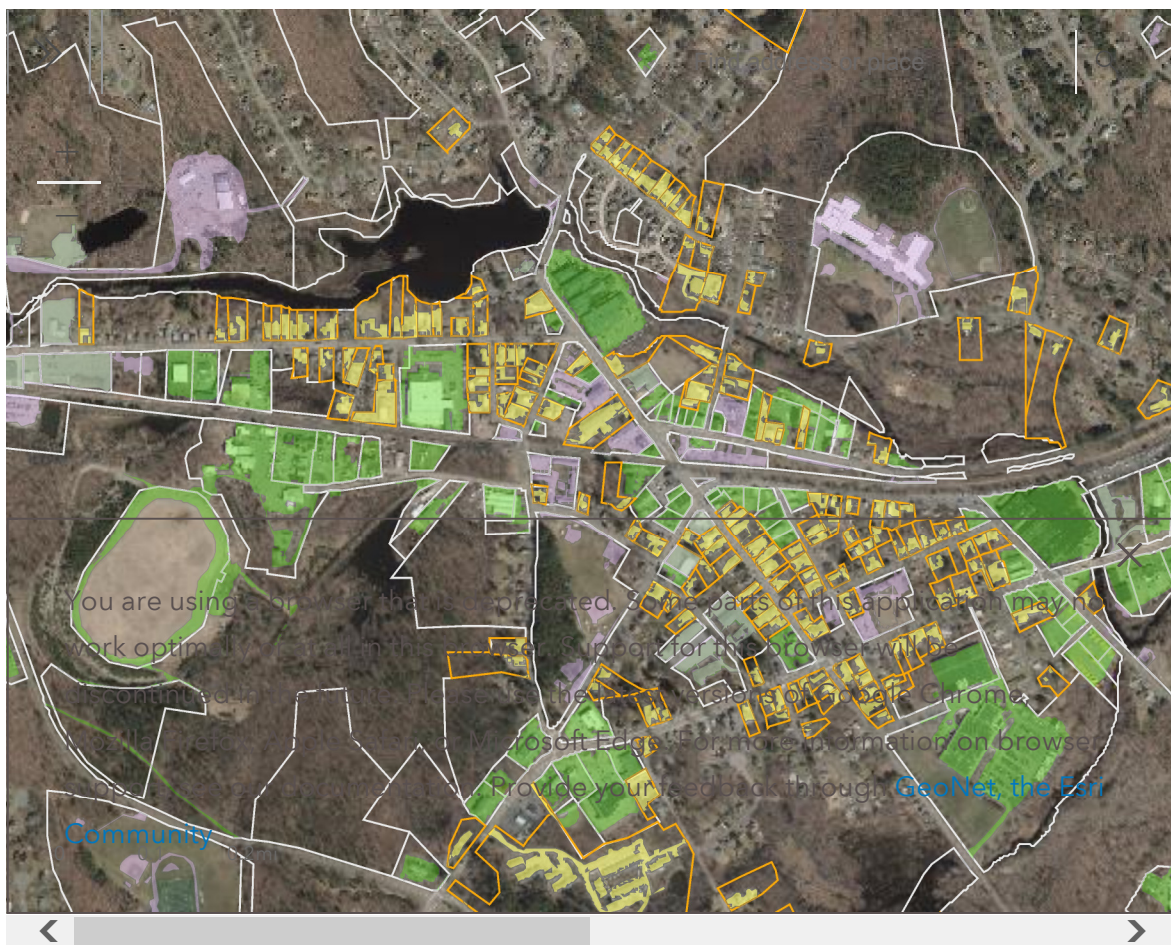
Tier 1 Residential: \$8.75/quarter per parcel

Tier 2 Commercial, Government and Other non-tax properties:
\$0.80/100 square feet of Impervious Area or a minimum of
\$20/quarter

Stormwater Fee Structure Property Codes

- [SMU tiers & property codes.pdf](#)

Type in your address and click on the highlighted area to see the impervious area of your parcel.



 Government Websites by CivicPlus®